

East Dunbartonshire

Senior Phase Partnership Prospectus 2022-23



Senior Phase Partnership 2022-23

Developing the Young Workforce

Skills for Learning, Life and Work



Find out what opportunities are available to you →



Care, Health & Sport Industries



Creative & Digital Industries



Business & Services Industries



Science, Engineering, Design & Manufacture Industries



Care, Health & Sport Industries

Creative & Digital Industries

Business & Services Industries

Science, Engineering, Design & Manufacture Industries

Foundation Apprenticeships

Supported Courses



Contents

General Information SCQF Framework

Care, Health & Sports Industries

Early Education & Childcare SfW SCQF 5	8
Early Learning & Childcare SfW SCQF 5	9
NQ Child & Social Care SCQF 5	10
NPA Social Services Children & Young People SCQF 6	11
Health Care and First Aid SCQF 5	12
Introduction to Nursing SCQF 5	13
Health & Social Care: Skills for Practice SCQF 6	14
Mental Health and Wellbeing SCQF 3/4	15
Introduction to Mental Health and Criminology SCQF 5	16
NPA Criminology SCQF 6	17
Psychology SCQF 5	18
Sport Coaching Through Play SCQF 6	19
Introduction to Adventure, Sport & Fitness SCQF 4	20
Personal and Social Development Transitions SCQF 3/4	21
Fitness for Uniformed & Emergency Services SCQF 4	22
Introduction to Teaching Education not SCQF levelled	23

Creative & Digital Industries

Computer Games Development SCQF 5	25
NPA Computer Games Development SCQF 6	26
Current Trends in Hairdressing and Make-Up: An Introduction SCQF 4	27
NQ Introduction to Hairdressing SCQF 4	28
Fashion and Textile Technology National 5	29
Higher Fashion & Textile Technology SCQF 6	30
NQ Introduction to Glass Production SCQF 5	31
NQ Introduction to Jewellery Arts & Technology SCQF 6	32
Higher Dance: Performing Arts SCQF 6	33
NPA Musical Theatre Practice SCQF 6	34
Professional Theatre Preparation SCQF 6	35
NPA Television Production SCQF 5	36
Sound Production: Recording SCQF 5	37
NPA Radio & Podcasting SCQF 5	38
Introduction to 3D Design Skills SCQF 5/6	39
NPA Graphic design SCQF 5	40
NPA in Cyber Security SCQF 6	41
Cyber Security SCQF 6	42

4-5 6

7

8
9
10
11
12
13
14
15
16
17
18
19
20
21
22
23

24

25
26
27
28
29
30
31
32
33
34
35
36
37
38
39
40
41
42

Business & Service Industries

Fashion Brand Retailing SCQF 7	44
Financial Services SCQF 5	45
Legal Studies SCQF 6	46
Supply Chain Operations SCQF 5	47
Introduction to Marketing, Advertising and Public Relations SCQF 6	48
Journalism SCQF 6	49
NPA Events SCQF 6	50
NPA Financial Services SCQF 6	51
Up in the Air/Down on the Ground - Hospitality, Events & Tourism SCQF 4/5	52
Barista SCQF 5	53
Introduction to Food Service Skills SCQF 4	54
Introduction to Café Culture SCQF 4	55

Science, Engineering, Design & Manufacture

Practical Electronics SCQF 5	57
HNC Electronic Engineering SCQF 7	58
Automotive Engineering SCQF 4	59
Building Services Engineering SCQF 5	60
Building Service Engineering SCQF 6	61
Building Service Engineering SCQF 7	62
Mechanical Engineering SCQF 7	63
Construction SCQF 5	64
NQ Introduction to Construction Crafts SCQF 5	65
Construction Management SCQF 7	66

Foundation Apprenticeships SCQF 6

Supported Courses

Glasgow Kelvin College	69-71
Glasgow Clyde College	72

Wider Achievement Awards

73

Given the changing picture due to the ongoing COVID-19 pandemic at the time of publishing, some course information may have changed. Please check with your Guidance Teacher/DHT to obtain latest information. Thank you for your understanding.

General information

What is the Senior Phase Partnership Programme?

The purpose of the Senior Phase Partnership Programme is to help young people develop knowledge and skills which will prepare them for the future job market, college or university. East Dunbartonshire's Senior Phase Partnership Programme offers young people a wide range of options which are accredited by the SQA or other professional bodies and provide young people with the skills, knowledge, and experience specific to the industry sector it represents.

"As they move into the senior phase, young people of all abilities should have the opportunity to follow industry relevant vocational pathways alongside academic studies. Thus we proposed new school-college vocational partnerships with the potential for young people to do qualifications such as National Certificates and Higher National Certificates as well as options to do the first year of a 3-4 year apprenticeship while still at school."

Developing Scotland's Young Workforce

Who can apply for a place?

Anyone who is S4 – S6 can apply for a place. Interested candidates should apply online at www.eastdunbarton.gov.uk/edopps4all. An open evening may take place at either college venues or online for young people and parents. Interviews may be required for some courses to confirm candidates have a genuine interest, meet entry requirements and are suitable for the chosen course. The interview also provides an opportunity for young people to ask any questions or raise any concerns that they may have. If courses are oversubscribed names will be added to a reserve list and young people will be notified if a place becomes available.

How are the courses delivered?

Most courses run for one academic year, with some Foundation Apprenticeships running for two academic years. The majority of courses will be delivered over two school afternoons, usually Tuesday and Thursday. Some courses have a different attendance pattern so course duration and attendance patterns should be checked carefully. Where appropriate, courses are delivered within a realistic working environment e.g. Construction and Building Services and Engineering are delivered in a simulated workshop.

4



How will the Senior Phase Partnership benefit me?

Courses are designed to help young people progress in a chosen career path. This is done by developing skills that are essential for life and work, such as:

- Attendance and punctuality
- Independent travel
- Analysing and problem solving
- Working with students from other schools
- Independent learning (e.g. taking notes in tutorials).

How will I learn?

Qualifications gained through the Senior Phase Partnership Programme are structured and assessed in the same way as school qualifications. Colleges use the same Scottish Candidate Number (SCN) as schools so young people should expect to see their college results alongside other school based qualifications on their SQA certificate issued in August. Some courses are industry recognised qualifications and will be certificated separately. Colleges, like school, can provide additional support if required.

It is important that the Vocational Co-ordinator is informed if additional time is required for exams or assistance is needed from a reader/scribe.

How can I progress?

When the course is complete some young people enter further or higher education or an apprenticeship related to the training they have received. There are a range of progression pathways given in the course descriptor. **Progression Pathways are often dependent on having additional qualifications.**

Additional information

Attendance

It is important to emphasise that joining the Senior Phase Partnership Programme represents a commitment to undertake and complete the chosen course. Most courses will run on Tuesday and Thursday afternoons from 1.30pm - 4pm. Young people are expected to continue to **attend college during prelims**. Young people are not expected to attend college during SQA exam leave. Registers will be sent to schools each week and any attendance issues will be reported to the Depute Head Teacher responsible for the Senior Phase Partnership Programme.

Transport

In most cases you will be transported **to** college and will be expected to travel independently **from** college. There are some circumstances when transport will be provided. Those who travel independently have the opportunity to access free bus travel from 31 January 2022 (young people up to the age of 21). In order to access this opportunity you will need a new or replacement National Entitlement Card (NEC) or Young Scot National Entitlement Card (Young Scot NEC) before boarding any bus. Note, previously issued cards will not allow access to the scheme. If you are 16 -21 years old you should apply for this new card yourself.

There are several ways to apply for a new or preplacement Young Scot National Entitlement Card (Young Scot NEC):

- Online at getyournec.scot. You can find out more information about the applications process and what documents you need on the getyournec.scot website.
- Directly from East Dunbartonshire Council following this link: / www.eastdunbarton.gov.uk/residents/apply/national-entitlement-card

Personal Protective Equipment

Some of the Senior Phase courses will require students to operate equipment and use specialist tools under supervision. This equipment, known as Personal Protective Equipment (PPE), will be issued to students. Students must bring the PPE on each college day and must wear the PPE as instructed.

Code of Conduct

All young people involved in the Senior Phase programme must:

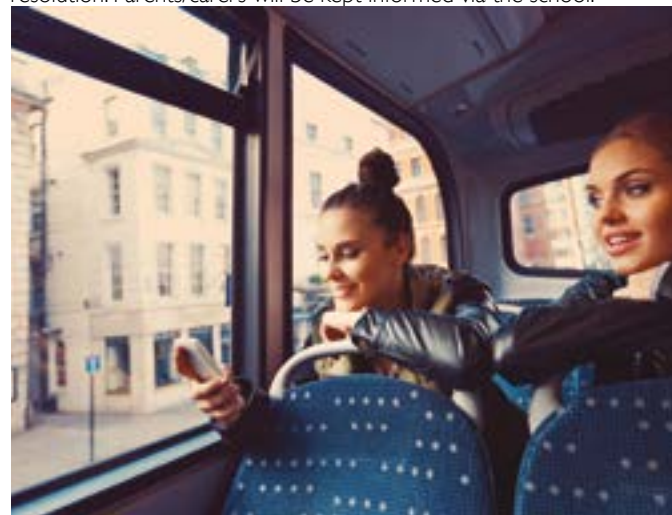
- Be well mannered
- Be prepared to participate in all aspects of the programme
- Consider their personal safety and the safety of others
- Abide by the Senior Phase Programme and College code of conduct.

Points to Remember

- All school work missed when attending college on Tuesday and Thursday should be completed.
- Weekly attendance at college is essential to ensure successful completion of the course content so commitment must be shown to the course selected.

Problems and Difficulties

In the event of any difficulties arising at college, the Vocational Co-ordinator, schools and colleges will work together to find a resolution. Parents/carers will be kept informed via the school.



Understanding Senior Phase Qualifications

The Scottish Credit and Qualifications Framework (SCQF) helps people to understand and compare different qualifications in Scotland. Scottish qualifications are delivered at SCQF level 1-12, schools deliver qualifications up to SCQF 7 which is Advanced Higher.

The Senior Phase Programme offers a range of courses from SCQF

3-7. Course awards include National Progress Awards (NPA), Skills for Work Awards (SfW) as well as National Certificates (NC) and Higher National Certificates (HNC). The course award is clearly identified on each page.

Please note: NPAs and SfW awards do not have a final exam.

THE SCOTTISH CREDIT AND QUALIFICATIONS FRAMEWORK

This framework diagram has been produced to show the mainstream Scottish qualifications already credit rated by SQA and HEIs. However, there are a considerable number of learning programmes on the Framework, which, due to the limitations of this format, cannot be represented here. For more information, please visit the SCQF website at www.scqf.org.uk to view the interactive version of the Framework or search the Database.

SCQF Levels	SQA Qualifications		Qualifications of Higher Education Institutions	Apprenticeships & SVQs
12			Doctoral Degree	Professional Apprenticeship
11			Masters Degree, Integrated Masters Degree, Post Graduate Diploma, Post Graduate Certificate	Graduate Apprenticeship Professional Apprenticeship SVQ
10			Honours Degree, Graduate Diploma, Graduate Certificate	Graduate Apprenticeship Professional Apprenticeship
9		Professional Development Award	Bachelors / Ordinary Degree, Graduate Diploma, Graduate Certificate	Graduate Apprenticeship Technical Apprenticeship SVQ
8		Higher National Diploma	Diploma Of Higher Education	Higher Apprenticeship Technical Apprenticeship SVQ
7	Advanced Higher, Awards, Scottish Baccalaureate	Higher National Certificate	Certificate Of Higher Education	Modern Apprenticeship SVQ
6	Higher, Awards, Skills for Work Higher			Modern Apprenticeship Foundation Apprenticeship SVQ
5	National 5, Awards, Skills for Work National 5			Modern Apprenticeship SVQ
4	National 4, Awards, Skills for Work National 4	National Certificate	National Progression Award	SVQ
3	National 3, Awards, Skills for Work National 3			
2	National 2, Awards			
1	National 1, Awards			



Staying at School



Leaving School



Rest of my world



Advice and Support



News and events

Care, Health & Sport Industries





Early Education & Childcare

Glasgow Kelvin College, Easterhouse/East End Campus SCQF 5

Course Outline

The course provides learners with the opportunity to further develop transferable skills for employability in the ever expanding field of Early Education and Childcare. This includes developing and analysing the skills required to work with children and young people.

National 5 Skills for work: Early Education & Childcare is an introductory qualification that develops the skills, knowledge and attitudes needed for work in early education and childcare sector. You will develop:

- An understanding of the workplace and the employee responsibilities (e.g. timekeeping, appearance, customer care)
- Self-evaluation skills
- A positive attitude to sharing
- Flexible approaches to solving problems
- Adaptability and positive attitude to change
- Confidence to set goals, reflect and learn from experience
- Skills to become effective job seekers and employees.

Qualification Breakdown

Mandatory units (all three included)

- Development and wellbeing of Children and Young People
- Play in Early Learning & Childcare
- Working in Early Learning & Childcare

- Optional Units (One will be selected):
- Care and Feeding of Children & Young People
- Contemporary Families
- Introduction to First Aid
- Children & Young People: Rights and Protections

Course Entry Requirements

- 3 National 4 awards
- Working towards National 5 English

Attendance Pattern

Tuesday and Thursday 1.30pm - 4pm

Progression Pathways

- Guaranteed interview for NC/HNC Early Education and Childcare at Glasgow Kelvin College
- Modern Apprenticeships in Childcare leading to a Scottish Vocational Qualification SCQ Level 3 in Social Services: Childcare and Young People.

Enhancement

As part of your course you can have the opportunity to undertake a period of work experience in an East Dunbartonshire Council Local Authority Nursery. Please ask your guidance teacher or work experience co-ordinator to arrange this.



Early Learning and Childcare

Glasgow Clyde College, Anniesland Campus Course Award- SfW, SCQF Level 5

Course Outline

Are you currently working in school at National 5 level or above? Are you interested in working with children aged 0-12 years? Are you interested in a career in the following areas; Child Development Officer, Child minding, Early Year's practitioner, Play worker or Play assistant or even Primary Teaching. Glasgow Clyde College can offer you an introduction to the basic knowledge and skills required to prepare you for further study leading to potential employment in the Early Education and Childcare sector:

The course is designed as an Introduction to Early Education and Childcare at National 5 level and will help you understand some of the demands and responsibilities for working in this sector:

Qualification Breakdown

You will study the following units:

- Play in Early Learning and Childcare
- Development and Wellbeing of Children and Young People
- Care and Feeding of Children and Young People
- Working in Early Learning and Childcare.

Course Entry Requirements

You must have or be working towards National 5 or equivalent. It is envisaged that students will be working at the senior phase of the curriculum and have a clear interest in the subject area.

Attendance Pattern

Tuesday and Thursday 1.30pm – 4pm.

Progression Pathways

A one year full time National Certificate (NC) or National Qualification (NQ) in Early Education and Childcare at a local college of further Education. NQ Childcare.

Employment Routes

- Child Development Assistant (Modern Apprentice)
- Playworker (following additional qualifications)
- Child Development Officer (following additional qualifications)



NQ Child, Health & Social Care



City of Glasgow College, City Campus SQA Units, SCQF 5

Course Outline

If you're interested in working with children or adults within the care sector, this course is an ideal first qualification. From the subjects studied, the course provides real life skills and opportunities for career planning and the enhancement of employment prospects within healthcare, children and young people's services and social care.

Qualification Breakdown

- Human Development and Behaviour (Psychology)
- Child Protection: An introduction
- Mental Health Issues: An Introduction
- Social Influences (Sociology)

Course Entry Requirements

- 3 National 4 awards from English, Maths, History, Modern Studies or Geography
- Working towards 3 National 4 awards
- A keen interest in working with people and developing good communication skills
- Pupils will be invited to attend an informal interview to assess their aptitude and interest to study this subject

Attendance Pattern

Tuesday and Thursday 1.30pm - 4pm

Progression Pathways

- NC Level 6 Early Education & Childcare
- NC Level 6 Health & Social Care
- SVQ Social Services
- SVQ Play work



Staying at School



Leaving School



Rest of my world



Advice and Support



News and events

NPA Social Services, Children & Young People

City of Glasgow College - City Campus NPA, SCQF Level 6

Course Outline

From the subjects studied, listed below, the course provides real life skills and opportunities for career planning and the enhancement of employment prospects within children and young peoples services. The qualification also meets the National Occupational Standards for employers.

This course requires a high level of commitment from the student genuinely interested in a career working with young people in the Care Industry.

Qualification Breakdown

- Communication with Children & Young People
- Safeguarding of Children & Young People
- Promote the Wellbeing & Safety of Children & Young People
- Development of Children & Young people
- Play for Children & Young People.

Course Entry Requirements

5 National 5s at Grade C or above.

Potential students will also be interviewed and provide one reference from school.

Attendance Pattern

Tuesday and Thursday 1.30pm - 4pm

Progression Pathways

- NC Level 6 Early Education & Childcare
- NC Level 6 Health & Social Care
- HNC Social Services (if students have one other higher at grade C or above plus pass the NPA)
- HNC Childhood Practice (if students have one other higher at grade C or above plus pass the NPA)
- Possible Care Support Worker role enabling the employee to commence SVQ 2 which meets the registration criteria of SSSC
- Facilitates progression to Modern Apprenticeship
- Year 2 Foundation Apprenticeship Children & Young People (work placement)



Health Care and First Aid

Glasgow Kelvin College, East End Campus Course Award - SCQF: Level 5

Course Outline

The Health Care and First Aid programme will provide you with an introduction to the nursing profession which will allow you to examine a career in nursing or the health care sector.

The course consists of practical sessions within the college such as first aid, health and safety risk assessments, and an introduction to basic clinical tests such as blood pressures, pulses and respirations.

The course will assist you to develop transferable skills such as wellbeing, employability and support employment opportunities. The course will also include additional sessions in Heart Start, Awareness of Moving and Assisting, and Bowel Cancer Awareness.

Qualification Breakdown

Units covered will be as follows:

- First Aid – which will include Heart Start
- Physiology of the Cardiovascular System
- Prevention of Infection
- Improving Health & Wellbeing.

College certificates in Heart Start, Moving and Assisting and Bowel Cancer Awareness.

Course Entry Requirements

You should be working toward National 5 English and have a genuine interest in nursing, and/or the field of health care.

Attendance Pattern

Tuesday and Thursday 1.30pm - 4pm

Progression Pathways

- NC Level 6 Health and Social Care. Candidates require to have successfully completed the full Health Care and First Aid course plus two passes at National 5 level C or above
- SVQ2 in Health and Social Services. Candidates require to have successfully completed the full Health Care and First Aid course plus two passes at National 5 level C or above
- HNC Care and Administrative Practice (Equivalent to First Year Nursing) Candidates require to have successfully completed the healthcare and first aid course plus have two additional Highers which must include English (or equivalent) at grade C or above.
- Careers in nursing and/or the health care sector



Introduction to Nursing

Glasgow Clyde College, Cardonald Campus SQA Units, SCQF 5, plus Glasgow Clyde College Certificate

Course Outline

This programme will provide students with an introduction to the nursing profession which will allow them to examine a career in nursing or health care. The course consists of some practical sessions within the college skills lab carrying out basic nursing skills such as bed bathing and prevention of infection.

The roles available within nursing will be explored and the responsibilities of a health care professional will be addressed. Candidates will be introduced to speakers from the health care sector and will attend clinical placement visits to meet with different areas within nursing.

The course tutors are from a nursing background and will share their own experiences and will subsequently offer advice on career options.

To support employment opportunities, certificates include Emergency First Aid, Health and Safety and an Introduction to Mental Health.

Qualification Breakdown

Four SQA Units plus specific additional employment certificates

- Basic Health Care Needs
- Prevention of Infection
- The Human Body
- Roles and Responsibilities (Skills for Work)
- Emergency First Aid, Health & Safety (in-house certificate)
- Introduction to Mental Health (in-house certificate)

Course Entry Requirements

- National 5 English and National 5 Maths or Numeracy
- A keen interest in the nursing profession

Attendance Pattern

Tuesday and Thursday 1.30pm - 4pm

Progression Pathways:

- NC Level 6 Health Care (Pre Nursing course with clinical placement on average one day per week). Candidates require to have successfully completed the full Intro to Nursing course plus three passes at National 5 grade A-C.
- HNC Care and Administrative Practice (Equivalent to First Year Nursing). Candidates require to have successfully completed the Intro to Nursing plus have two additional Highers which must include English.



Health & Social Care: Skills for Practice

City of Glasgow College, City Campus SQA National Progression Award, SCQF 6

Course Outline

This is an excellent course for any student looking to commence a career in care or nursing. Successful completion of the NPA enables the student to enter further study for example HNC Care & Administrative Practice which gives them the qualification to apply for various nursing courses or other Allied Health Professional courses.

The course provides real life skills and opportunities for career planning and enhancement of employment prospects.

The qualification also meets the National Occupational Standards for Employers. NOS describe the skills, knowledge and understanding needed to undertake a particular task or job to a nationally recognised level of competence. They focus on what you need to be able to do, as well as what you must know and understand to work effectively.

Qualification Breakdown

- Person Centred Approach to Care
- Safe Practice in Care
- Practical Caring Skills

Course Entry Requirements

- 5 National 5 awards at A-C
- Potential candidates will also be interviewed and should provide a reference from school
- An interest in the carer or nursing profession.

Attendance Pattern

Tuesday and Thursday 1.30pm - 4pm

Progression Pathways:

- NC Health & Social Care
- HNC Social Services
- HNC Care & Administrative Practice
- Modern Apprenticeships in the Health or Care sectors





Mental Health and Wellbeing

City of Glasgow College, City Campus Mental Health and Wellbeing/Exploring and Improving Wellbeing SCQF: Level 3/4

Course Outline

On this course you will develop an understanding of mental health, influences and coping strategies. You'll take part in a group project talking about stigma around mental health and well-being and gain an insight into how you can support yourself and others.

Be part of a supportive group that will look at the influences of mental health and well-being, coping strategies and resilience as a way of gaining a greater insight into mental health and well-being.

This is an interactive and engaging class linking and developing knowledge through learning development and project work. Exploring and improving well-being is an engaging and informative qualification that allows you to look at how you can improve your well-being and how to implement it in your life.

Course Entry Requirements

- Level 3 / 4 English

Attendance Pattern

Tuesday or Thursday 1.30pm - 4pm

Progression Pathways

- Level 5 Health and Social Care
- Level 5 Early Years
- Level 5 Introduction to Counselling
-

Employment Routes

- Social Care Sector
- Youth work

Introduction to Mental Health and Criminology

Glasgow Kelvin College, Springburn Campus Course Award- SCQF: Level 5

Course Outline

This gives you a taster of Mental Health and Criminology units, which can lead to higher-level courses in the care sector and eventually care work with focus on Mental Health; or, higher-level courses in Criminology or Humanities. This course will assist you in developing transferable skills such as: employability, wellbeing and personal growth.

Qualification Breakdown

- Influences on Mental Health and Wellbeing (Level 4)
- Mental Health Issues: An Introduction (Level 5)
- Criminology: Crime in the Community (level 5)

Course Entry Requirements

You should be working toward National 5 English and have a genuine interest in Mental Health Care and/or Criminology. Looking at careers in Social Work, Mental Health Care and/or the field of Criminology and Criminal Justice.

Attendance Pattern

Tuesday and Thursday 1.30pm – 4pm.

Progression Pathways

- Mental Health Nursing
- Social work
- Criminal Justice
- Criminology.



NPA Criminology

City of Glasgow College, City Campus Course Award- SCQF: Level 6

Course Outline

This National Progression Award (NPA) allows learners to study criminology, including the complex nature of crime and the problems of measuring crime.

It develops an understanding of crime and the criminal justice system and provides bite-sized chunks of learning that are straightforward for learners to study.

Qualification Breakdown

- The Nature and Extent of Crime
- Forensic Psychology
- Crime Scenes

Course Entry Requirements

Applicants are expected to have National 5 English

Attendance Pattern

Tuesday and Thursday 1.30pm – 4pm.

Progression Pathways

- HNC in Social Sciences with additional entry requirements
- HND in Social Sciences after HNC

Employment Routes

- Police and uniformed services
- Legal services
- Social welfare
- Social care





Staying at School



Leaving School



Rest of my world



Advice and Support



News and events

National 5 Psychology

Glasgow Kelvin College - Springburn Campus SCQF 5

Course Outline

The main purpose of the course is to enable students to develop an understanding of the human mind and behaviour and to enhance their interest in psychology. The course is suitable for all students with an interest in finding out more about human behaviour and the mind.

Qualification Breakdown

Psychology: Research

Psychology: Individual Behaviour

Psychology: Social Behaviour

Course Entry Requirements

Students should have or be working towards National 5 English.

An interest in studying human behaviour and life experience.

Attendance Pattern

Tuesday & Thursday 1.30pm - 4pm

Progression Pathways:

Higher Psychology Course or relevant component units

Other qualifications in social studies, social sciences or related areas

Further study, employments and/or training

Sports Coaching Through Play

Glasgow Clyde College – Anniesland Campus NPA, SCQF Level 6

Course Outline

The National Progression Award (NPA) will develop your knowledge and skills of the coaching process - planning, delivering and evaluating. The course takes a practical approach, and you will take part in all aspects of coaching and playing various sports both indoor and outdoor. You will take part in sports such as, badminton, basketball, volleyball, football, rugby, hockey and American football.

Qualification Breakdown

This award has three units and you will need to complete them all to achieve the NPA. All units will be carried out in a sport or fitness environment and assessments will reflect the practical nature of the course. For some of the units team working will be involved and you will need to play a full part as it will be your own work and contribution which will be assessed.

You will study the following units:

- Working with children and young people to provide play in a sport environment
- Health, safety and wellbeing of children and young people in a sport environment
- Provide play sessions in a sport environment.

Course Entry Requirements

- At least 3 National 5 passes
- Have a passionate interest in playing sport, coaching sport and/or personal fitness or fitness instructing
- An interest in any of the following career paths - Coach, Teacher, Fitness Instructor, Sport Development Officer and Active Schools Coordinator.

Attendance Pattern

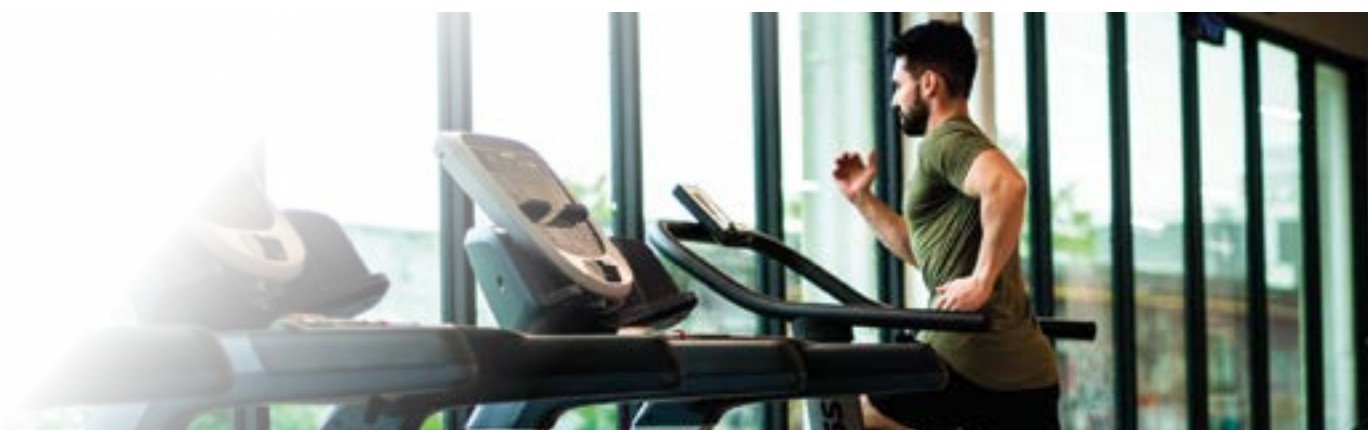
Tuesday and Thursday 1.30pm - 4pm

Progression Pathways:

- NQ Sports Coaching, level 6
- NQ Celtic Football Coaching Pathway, level 6
- NQ Fitness, Health and Exercise, level 6
- HNC Coaching and Developing Sport
- HND Coaching and Developing Sport
- HNC Football – Coaching with Development
- HNC Fitness, Health and Exercise
- HND Fitness, Health and Exercise

Employment Routes

The units are not designed to lead directly to employment but will enable you to develop knowledge and skills required by employers.



Introduction to Adventure Sport & Fitness

Glasgow Kelvin College, Springburn Campus College Certificated SCQF 4

Course Outline

If you are a lover of outdoor sport & fitness, then this programme is for you! This course will provide you with the basis for employment in sports facilities, gyms and outdoor activity centres. It's practical in nature and focuses on a range of fitness related activities. Career options would include; Sports Coach, Fitness Instructor, Personal Trainer, Outdoor Activities Instructor or Sports Development Officer.

Activities Include; Resistance Training, Group Exercise, Cardio Training, Watersports, Walking & Orienteering, Dry Slope Skiing, and Climbing.

Qualification Breakdown

- Teamwork through Sport & Recreation Activities
- Nutrition, Health & Wellbeing
- Developing Leadership within Physical Activities
- Contemporary Fitness and Exercise Training Methods: An Introduction
- Sport & Recreation: Assist with Daily Centre Duties

Course Entry Requirements

Students must have a strong interest in fitness and be willing to participate in a variety of activities. Water confidence is essential.

Attendance Pattern

Tuesday and Thursday 1.30pm - 4pm

Progression Pathways

This is an entry level course providing the basic knowledge for you to continue your studies with us in

- Fitness, Health & Exercise
- Adventure Sports
- Sports Coaching

Employment Routes

- Students are encouraged to progress onto NC, HNC, HND courses prior to seeking employment in the sport, fitness or outdoor education industry.





Staying at School



Leaving School



Rest of my world



Advice and Support



News and events

Personal and Social Development Transitions

City of Glasgow College, City Campus City of Glasgow College Certificate at SCQF Level 3/4

Course Outline

This course is designed for pupils with additional support needs. The course will assist pupils with Asperger's Syndrome to make a successful transition from school to Further Education and training. The group will develop communication skills, social skills, negotiation skills and confidence.

Qualification Breakdown

- Core Skills
- Communication
- Personal & Social Development
- Skills for Life and Work

Course Entry Requirements

- A diagnosis of ASD
- Working towards level 3-4 in Literacy and Numeracy
- A desire to continue studies in Further Education.
- Interested pupils will attend a taster session and this observation will be part of a selection process

Attendance Pattern

Thursday 9.30am - 12noon

Progression Pathways:

- Full time transition course
- Mainstream college courses in vocational areas of choice
- Generally this course encourages students to apply to a range of further education mainstream courses



Fitness for Uniformed and Emergency Services

Glasgow Kelvin College - Springburn Campus SfW, SCQF Level 4

Course Outline

The Uniformed and Emergency Services Course has been designed to provide you with opportunities to develop employability skills in the context of the uniformed and emergency services.

The services for this Course are:

- Army
- Merchant Navy
- Royal Air Force
- Royal Navy
- Royal Marines
- Ambulance Service
- Coastguard
- Fire and Rescue
- Police

The course will provide different learning environments and experiences which simulate aspects of the workplace. These experiences might include visits, visiting speakers, role play and other practical activities. The skills acquired by students will prepare them to work within the context of the uniformed and emergency services within Scotland.

Qualification Breakdown

An Introduction to Uniformed and Emergency Services
Health, Safety, Fitness & Wellbeing
Engaging with the community
Working in Teams

Course Entry Requirements

Much of the course is fitness orientated often tailored to the service you are interested in. There are no entry criteria for this award other than a keen interest in Fitness and Uniformed & Emergency Services.

Attendance Pattern

Tuesday and Thursday 1.30pm - 4pm

Progression Pathways:

- Employment
- Uniformed Services
- College Programmes



Introduction to Teacher Education

University of Strathclyde, John Anderson Campus – Open to S6 Pupils only

Course Outline

The Introduction to Teacher Education course will provide you with an introduction to the teaching profession - both primary and secondary. You will explore four themes, where you will be drawing on your previous experiences to highlight your own key strengths and examining how these attributes are desirable in Education. You will look at what you know about pupil engagement and success in learning and will experience different approaches. You will have the opportunity to consider the various components that contribute to effective learning and teaching and build skills in these areas. You will get the opportunity to plan, design, deliver and evaluate lessons and learning opportunities. Links will be made to any work experience/volunteering you are currently undertaking. In addition, you will be reviewing what you know about learning and teaching, and identifying what you have gained from the programme with a view to supporting you in generating your personal statements, assisting and preparing you for the application process.

Qualification Breakdown

The course will support students wishing to consider teaching as a profession. The course will prepare attendees for making a UCAS application for Primary Teaching and for preparing personal statements for other subjects that will qualify candidates for PGDE courses. You will explore four themes:

- Getting to know your own skills
- How learning works
- Components of effective teaching
- Putting it altogether

Course Entry Requirements

You must have:

- A pass in Higher English at A or B level
- A pass in National 5 Maths at Grade C or above

Attendance Pattern

Tuesday & Thursday afternoons (1.30pm to 4pm). The duration of the course is August to December.

Progression Pathways

You might go on to do:

- BA/BEd with a Teaching Qualification
- Other university course to study a subject relevant to teaching followed by a PGDE
- BA Education Studies
- Joint honours programme with Education as a subject
- Valuable resources available in school and online include:
- University of Strathclyde School of Education: www.strath.ac.uk/humanities/schoolofeducation/
- General Teaching Council of Scotland: www.gtcsc.org.uk
- Entry Requirements for Initial Teacher Education: www.gtcsc.org.uk/web/FILES/about-gtcs/memorandum-on-entry-requirements-to-programmes-of-ite-in-scotland.pdf





Staying at School



Leaving School



Rest of my world



Advice and Support



News and events

Creative & Digital Industries



Computer Games Development

Glasgow Clyde College, Anniesland Campus SQA National Progression Award, SCQF 5

Course Outline

The National Progression Award (NPA) introduces you to the skills required by people who have an interest in the games industry and wish to enter future employment in ICT and new technologies or continue into further and higher education.

In this course you will research various games types and platforms and discover what makes a game playable. You will also learn about the components that make up games and what is required for different playing platforms. When you have developed your knowledge and skills, you will be required to design and develop a game by creating a set of objects including characters, backgrounds and sounds.

Throughout the course you will increase your knowledge and skillset and will learn how to improve your game to include behaviours designed to enhance game play. Your final goal will be to create a playable game and publish it on the internet.

Qualification Breakdown

- Computer Games: Design
- Computer Games: Media Assets
- Computer Games: Development

Course Entry Requirements

- National 3 or 4 Literacy and Numeracy
- National 4 Computing Science
- A genuine interest in the gaming industry

Attendance Pattern

Tuesday and Thursday 1.30pm - 4pm

Progression Pathways:

The level 5 award could provide progression to:

- NPA Computer Games Development SCQF Level 6
- NC Digital Media Computing at SCQF Level 6
- NPA in Digital Media Production at SCQF Level 6
- A one year national certificate (NC) in computing at a local further education college.



NPA Computer Games Development

City of Glasgow College, City Campus SQA National Progression Award, SCQF 6

Course Outline

The NPA in Computer Games Development at SCQF level 6 introduces learners to the genres, trends and emerging technologies of the computer games industry. This award provides a foundation in techniques that are important to the sector, such as digital planning and design, creation of media assets, and development and testing - while also developing employability skills and core skills through enterprise activities.

This qualification covers core areas such as design, media assets and development. Coding is also an important part of this qualification. The award will improve learners' computational thinking skills.
Group Award Code: GP04 46

Qualification Breakdown

- HX9V 46 Computer Games: Design
- HX9W 46 Computer Games: Media Assets
- HX9X 46 Computer Games: Development

Course Entry Requirements

- Students wishing to progress further in Games Development would preferably have Maths and Computing qualifications at National 5 level or above.

Attendance Pattern

Tuesday and Thursday 1.30pm - 4pm

Progression Pathways

- NQ Computing
- Games Development (level 6)
- HNC Computer Games Development depending on other qualifications gained

Employment Routes

With appropriate additional qualifications and/or University study the following may be considered:

- Games Design
- Games Development
- Software Development.



Current Trends in Hairdressing and Make-up: An Introduction

Glasgow Kelvin College, Easterhouse Campus
NPA, SCQF Level 4

Course Outline

An introductory course for aspiring Hairdressers/Make-up artists or those wishing to improve their skills and learn the basics of Hairdressing and Make-up.

Through practical workshops you will be introduced to the basic skills and creative techniques used by professional Hairdressers/Makeup Artists to produce current looks inspired from Instagram Trends. Additionally, the creation of an online Folio will provide the opportunity to develop your Digital Skills.

The course will begin with an introduction into both Hair and Beauty, you will then have the option to choose your preferred area for further learning and complete an online folio to showcase practical skills developed throughout the course.

Qualification Breakdown

Hair:

- Shampooing,
- Blow drying,
- Curling Techniques
- Hair-up
- Current Creative Hair Trends

Make-up:

- Classic Day and Evening Make-up
- Smoky Eyes
- Spotlight and Cut Crease
- Current Creative Make-up Trends

Transferable Skills:

- Digital skills: Microsoft Teams and One Note
- Introduction to Social Media for Hair/Beauty
- Health and Safety
- Customer Service
- Working as part of a Team

Course Entry Requirements

You must have a keen interest in the Hair/Make-up Industry and willing to participate in practical activities..

Attendance Pattern

Tuesday and Thursday 1.30pm - 4pm

Progression Pathways

- NQ Beauty or Spa Therapies
- NQ Make Up Artistry
- NQ Hairdressing
-

Following completion of further training you can be employed in a Hair/Make-up Salon, Spa, Cruise ship or you may wish to be self-employed.





Staying at School



Leaving School



Rest of my world



Advice and Support



News and events

NQ Introduction to Hairdressing, (Beauty & Make-up Artistry)

City of Glasgow College, City Campus Course Award - SCQF: Level 4

Course Outline

This exciting course focuses on three career paths in the hair and beauty industry. A practical course which will focus on developing a range of skills in the following areas;

- Hairdressing
- Beauty Therapy
- Make-up Artistry.

To further enhance the learning experience students will benefit through career events and additional training opportunities from our key industry partners.

This course is of most value to students in their leaving year who are unsure about their vocational goals.

Qualification Breakdown

- Hairdressing Practical Skills
- Beauty Therapy Practical Skills
- Make-up Artistry Practical Skills
- Product Awareness
- Health and Safety
- Creativity

Course Entry Requirements

Students should be in Senior Phase and there are no pre-entry qualifications required.

Attendance Pattern

Tuesday and Thursday 1.30pm – 4pm

Progression Pathways

- NQ 5 Hairdressing
- NQ 5 Beauty and Make-up
- NQ 5 Barbering

Employment Routes

Modern Apprenticeship in Hairdressing



Fashion and Textile Technology

Glasgow Clyde College, Cardonald Campus Course Award- National 5

Course Outline

The National 5 Fashion and Textile Technology Course enables you to develop an understanding of textile properties, characteristics and technologies, item development, fashion/textile trends and factors that affect fashion choice. The Course particularly emphasises the development of practical skills and textile construction techniques to make detailed fashion/textile items, to an appropriate standard of quality. You will have the opportunity to be creative and imaginative in the design process. This course will be delivered using an active learning approach.

The practical learning activities in the course encourage you to develop problem solving techniques, make informed choices and take responsibility for the development of an idea through to the completed item. The course will use underpinning knowledge and focuses on designing, planning, making and evaluating detailed fashion/textile items.

Qualification Breakdown

National 5 Fashion and Textile Technology SCQF Level 5:

- Textile Technologies
- Fashion/Textile Item Development
- Fashion and, Textile Choices

These will be a mixture of practical and theory based tasks, and rather than being awarded a grade for each pupils will receive feedback on their strengths and areas of improvement.

Course Entry Requirements

You must have a keen interest in fashion and textiles to complete this National 5 subject.

Attendance Pattern

Tuesday and Thursday 1.30pm – 4pm.

Progression Pathways

You might go on to do:

- Clothing/textile technologist
- Interior and special designer
- Fashion designer
- Textile designer
- Clothing and manufacturing engineer
- Retail buyer
- Retail merchandiser
- Costume Designer/Assistant/Maker
- Pattern Maker/Cutter.



Higher Fashion & Textile Technology

Glasgow Clyde College, Cardonald Campus SCQF Level 6 – Open to S5/6 Pupils

Course Outline

The Higher Fashion and Textile Technology course will provide you with the opportunity to combine practical and experiential elements of fashion and textiles with knowledge and understanding to support fashion/textile-related activities.

You will apply both a problem-solving approach and practical skills to develop knowledge and skills relevant to the fashion/textile industry. In addition, you will develop, make and evaluate complex fashion/textile items in practical contexts.

Qualification Breakdown

Higher Fashion and Textile Technology SCQF Level 6:

- Textile Technologies
- Fashion/Textile Item Development
- Fashion and Textile Choices

Course Entry Requirements

- National 5 Fashion and Textile Technology

Suitable for students opting for this subject for the first time who have a keen interest in practical textiles.

Attendance Pattern

Tuesday and Thursday 1.30pm – 4pm. August until May.

Progression Pathways

- A full-time higher education course, such as a Higher National Certificate (HNC), Higher National Diploma (HND) in Fashion and Textiles, Bachelor of Arts (BA) in Fashion Management, Bachelor of Arts (BA) in International Fashion Branding or Bachelor of Arts (BA) in Costume Design and Construction
- The level you might enter would depend on the level and relevance of your other qualifications
- Employment or training in fashion or textile industries
- Retail buyer
- Retail merchandiser
- Costume Designer/Assistant/Maker
- Pattern Maker/Cutter

Valuable resources: www.myworldofwork.co.uk, www.planitplus.net, www.workit.info



NQ Art & Design: Introduction to Art Glass Production

City of Glasgow College, City Campus Course Award- SCQF: Level 5

Course Outline

This exciting collaborative course brings together the world of Art and Design and Art Glass. A practical course which will focus on developing a range of skills in the following areas;

- Design and Manufacture of Art Glass work
- Developing a range skills in designing and making Contemporary Glass artefacts
- 2D and 3D Art Glass manufacture.

To further enhance learning, Student and Artist talks will be included in the programme to ensure students have a clear understanding of the vibrant career paths available.

Qualification Breakdown

- 1x IT Based unit using technology such as CAD or Photo Shop
- 1x developmental drawing unit
- 2x product design units which will follow the complete design and production process

Images of student work can be found here @artglasscgc
<https://www.instagram.com/artglasscgc/?hl=en>

Course Entry Requirements

Students should be in Senior Phase and have 4 National 4/5 Qualifications including English and an Art or Craft/Design subject

Attendance Pattern

Tuesday and Thursday 1.30pm – 4pm

Progression Pathways

- NQ Art and Design
- NQ Jewellery
- NQ Applied Arts
- HNC Art Glass Production
- HNC Applied Arts

Employment Routes

- Working as a Solo Stained Glass Artist
- Work within the Glass Industry
- Designer
- Jewellery worker
- Artist

This course is of most value to students in their leaving year who are unsure about their vocational goals.



NQ Introduction to Jewellery Arts & Technology

City of Glasgow College, City Campus Course Award- SCQF: Level 6

Course Outline

This course will teach you a comprehensive range of skills in jewellery design, with a design-led focus.

You will be encouraged to develop your own creative ideas and will be taught how to translate these ideas into finished, 3D pieces of jewellery.

The course will cover basic areas such as metal forming, piercing, soldering, surface decoration and design work.

There is a strong ethos of ethical making and sustainability, which will be embedded into your learning.

Qualification Breakdown

- 1x IT Based unit using technology such as CAD or Photo Shop
- 1x developmental drawing unit
- 2x product design units which will follow the complete design and production process

The qualification also meets the National Occupation Standards for employers.

Course Entry Requirements

Students should be in Senior Phase and have National 5 English and an Art or Craft/Design subject.

Attendance Pattern

Tuesday and Thursday 1.30pm – 4pm

This course requires a high level of commitment from the students genuinely interested in a career working in the Jewellery Arts Industry.

Progression Pathways

- NQ Jewellery Arts & Technology
- NQ Applied Arts
- HND Applied Arts (if candidates have Art higher at grade C or above, higher English at grade C or above plus pass the NPA)
- HNC Applied Arts (if candidates have Art higher at grade C or above, higher English at grade C or above plus pass the NPA)

Employment Routes

- Self Employed
- Designer
- Bench Jeweller
- Multi-Disciplinary Artist
- Designer Maker



Higher Dance: Performing Arts

Glasgow Kelvin College, Easterhouse Campus Course Award- SCQF: Level 6

Course Outline

The higher dance course supports candidates with a real interest in dance and performance and for those wishing to enter future employment or further study. Candidates learn how to use dance techniques and choreography creatively to enhance performance.

They also explore the use of theatre arts in dance and a range of dance styles. Candidates have the option to learn contemporary, commercial, jazz, ballet and tap alongside understanding and applying the principles of safe dance practice.

Course Entry Requirements

Candidates would be required to take part in a dance audition and have a National 5 in English.

Attendance Pattern

Tuesday and Thursday 1.30pm – 4pm.

Progression Pathways

Performance skills learned during the course also provide options for progression into musical theatre or acting courses.

Higher dance teaches the candidates the knowledge required to take part in professional auditions for performance work and choreography skills to lead their own performances.



NPA Musical Theatre Practice

Glasgow Kelvin College, Easterhouse Campus SQA National Progression Award, SCQF 6

Course Outline

This course takes account of the knowledge and skills required by people who have a real interest in musical theatre and wish to enter future employment in that area or; continue to study performance in further and higher education.

In this course you will learn about and develop techniques in expression and communication to an audience, and about theatre arts and performance.

Qualification Breakdown

- Acting through song
- Solo or group singing skills
- Group dance performance

Course Entry Requirements

This course will be of particular interest and benefit to students who already have successfully achieved a pass in National 5 Drama and who have a keen interest in developing their skills in singing, acting and performance.

- An informal audition will take place during the first week which will take the form of a performance of one short age-appropriate monologue and song.

Attendance Pattern

Tuesday and Thursday 1.30pm - 4pm

Progression Pathways:

Along with relevant National 5 passes (C grade or better), this could lead to the full-time NC Acting and Performance. Along with relevant Higher passes (C grade or better) this could lead to the full-time HND Acting and Performance.

Employment Routes

- Professional performer
- Teaching
- PR
- Events





Staying at School



Leaving School



Rest of my world



Advice and Support



News and events

Professional Theatre Preparation

Glasgow Kelvin College, Easterhouse Campus SQA National Progression Award, SCQF 6

Course Outline

This course helps you develop the knowledge and skills required by people who have a real interest in acting and theatre wishing to enter future employment in that area or continue to study performance in further and higher education.

Qualification Breakdown

- Preparation for Audition
- Drama: Acting Skills and/or Voice Skills

Course Entry Requirements

- Entry to course will be subject to an audition which will take the form of a performance of two short age-appropriate monologues during the first week of the course.
- National 5 Drama
- A keen interest in developing skills in acting and performance

Attendance Pattern

Tuesday and Thursday 1.30pm - 4pm

Progression Pathways:

- NC Acting and Performance
- HND Acting and Performance



NPA Television Production

City of Glasgow College, City Campus SQA National Progression Award, SCQF 5

Course Outline

This course has been designed to provide you with an introduction to the skills required in the television industry and as a pathway to further study in this field.

The course is practical in nature and will involve a hands-on approach, giving you experience in camera operations, sound, directing and editing. You will have access to equipment and resources at the college which will enable you to produce and create your own short television programme.

During the course you will also develop skills in working with others, problem solving, writing, reading, speaking and listening.

Qualification Breakdown

- Media: Sound Recording for Single Camera
- Media: Directing a Single Camera Production
- Media: Basic Video Editing
- Media: Basic Video Camera Operations

Course Entry Requirements

- Ability to work at National 4 level
- National 4 units in Numeracy and Information Technology
- Capable of Problem Solving and Working With Others at SCQF 4
- An interest in Creative industries
- National 5 English

Attendance Pattern

Tuesday and Thursday 1.30pm - 4pm

Progression Pathways

- NQ Television
- NQ MEDIA
- Other courses in TV, Radio, Media & Communication, Journalism & Digital Media.





Staying at School



Leaving School



Rest of my world



Advice and Support



News and events

Sound Production: Recording

Glasgow Kelvin College, Easterhouse Campus SQA National Progression Award, SCQF 5

Course Outline

The course is designed to give students an understanding of basic audio systems as applied in both studio recording and live settings. It offers opportunities to assemble basic PA systems, make recordings and remix these to a given brief. It is underpinned by theory relating to systems design and component/cabling recognition and safe, appropriate usage. It is a mix of studio and lab environments.

Qualification Breakdown

- Sound Production: Recording and Editing (HITF 11)
- Music Technology in Context (H247 75)
- Sound Engineering and Production (F5DW 11)

Course Entry Requirements

- Working towards National 5 in Music Technology would be useful as would practical experience of working in a recording and/or live sound environment. E.g. working with bands at school shows, rehearsing/recording experience

Attendance Pattern

Tuesday and Thursday 1.30pm - 4pm

Progression Pathways

- Articulation would be to Audio and Visual Design L5/6 and the HND Sound Production though you would have to have other qualifications to go directly to the HND

Employment Routes

- Live/Theatre Sound Engineer/Technician
- Studio Engineer
- Sound Technician
- Audiology
- Games Development
- TV/Film Soundtrack and Foley engineers/technicians



NPA Radio & Podcasting

City of Glasgow College, City Campus Course Award- SCQF: Level 5

Course Outline

This National Progression Award (NPA) in Radio Broadcasting is an introduction to producing content for radio and podcasts.

It develops skills in programme development, preparing content for online and broadcast distribution and presentation skills to camera and microphone.

Qualification Breakdown

- Radio Interviewing
- Presenting for Radio and TV
- Radio Journalism
- Making a Radio Programme

Course Entry Requirements

Applicants are expected to have National 5 English.

Attendance Pattern

Tuesday and Thursday 1.30pm - 4pm. August - April.

Progression Pathways

- NQ Broadcasting
- HNC Radio

Employment Routes

- Radio
- Podcasting
- Producing online content



NQ Introduction to 3D Design Skills (Model Making & Product Design)

City of Glasgow College, City Campus Course Award- SCQF: Level 5/6

Course Outline

This course gives you an introduction to the basic principles of 3D design. You'll gain a foundation in the creative, research, technical and analytical skills required for the specialist areas of product design and model making.

The course is taught by creative tutors with many years' experience in art and 3D design.

This is a practical project-based course where you'll use your creativity and knowledge to work on a range of product design briefs using 2D and 3D processes including Computer Assisted Drawing programmes.

Qualification Breakdown

- 1x IT Based unit using technology such as CAD or Photo Shop
- 1x developmental drawing unit
- 2x product design units which will follow the complete design and production process

Course Entry Requirements

Students should be in Senior Phase and have 3 National 4 Qualifications, including English and Art & Design

Attendance Pattern

Tuesday and Thursday 1.30pm - 4pm

This course requires a high level of commitment from the students genuinely interested in a career in one of the many pathways 3D design can lead to.

Progression Pathways

- NQ Model Making for TV & Film
- NQ Product Design
- NQ Furniture Design
- HNC/D in Product Design
- HND in Model Making
- HND in Furniture Craftmanship

View examples of our work on Instagram

<https://www.instagram.com/hndmodelmakingcgc/>

<https://www.instagram.com/productdesigncgc/>



NPA Graphic Design

City of Glasgow College, City Campus Course Award- SCQF: Level 5

Course Outline

The course will introduce students to the subject of Graphic Design which combines Art, Communication and Technology.

The course comprises 3 SQA Level 5 Units which will be integrated into a series of practical and creative projects.

Students will follow several design briefs covering subjects such as: researching styles and trends, experimentation of different ideas and media in the sketchbook, branding (logos), advertising (posters, web, social media), layout and typography (brochures) and be introduced to Adobe software, specifically Photoshop and Illustrator.

Course Entry Requirements

This course would suit imaginative and creative students who hold National 5 English and Art & Design, or other relevant national qualifications at SCQF Level 5.

Attendance Pattern

Tuesday and Thursday 1.30pm - 4pm

Progression Pathways

At the end of the course the students will have built a small folio of creative graphic design work and may apply for full-time study on either NQ or HNC Graphic Design.

Employment Routes

With further qualifications you could choose from a wide range of graphic design careers including:

- Design Assistant
- Photo Editor
- Graphic Designer



NPA in Cyber Security

City of Glasgow College, City Campus Course Award- SCQF: Level 6

Course Outline

The National Progression Award (NPA) in Cyber Security provides foundation knowledge and skills in data security, digital forensics and ethical hacking – providing a skills pipeline into the Cyber Security industry.

These awards are designed to raise awareness of Cyber Security and fill the current skills gap in this field. They will encourage learners to improve their cyber hygiene and resilience, and enable them to identify security vulnerabilities safely, legally and ethically. They will also help learners to contribute more safely to virtual communities. The aim of the awards is to produce knowledgeable and skilled individuals who are aware of the potential misuses of, and unauthorised access to, computer systems but who use these competences for legal and ethical purposes.

Qualification Breakdown

- Data Security
- Digital Forensics
- Ethical Hacking

Course Entry Requirements

Applicants are expected to have National 5 English & National 5 in Computing Science (or National 5 Mathematics/National 5 Physics).

Attendance Pattern

Tuesday and Thursday 1.30pm – 4pm.

Progression Pathways

- HNC in Cyber Security
- HND in Cyber Security
- Technical Apprenticeship in Information Security

Employment Routes

- Cyber Security Analyst
- Cyber Security Consultant
- Software Engineering
- Security Officer



Cyber Security

Glasgow Clyde College – Anniesland Campus SCQF Level 6 – Open to S5/6 Pupils

Course Outline

The National Progression Award (NPA) in Cyber Security will provide you with a foundation knowledge and skills in data security, digital forensics and ethical hacking - providing a skills pipeline into the cyber security industry.

The course is designed to raise awareness of cyber security and fill the current skills gap in this field. You will be taught how to improve your cyber hygiene and resilience, and enable you to identify security vulnerabilities safely, legally and ethically. It will also help you to contribute more safely to virtual communities.

Qualification Breakdown

National Progression Award in Cyber Security SCQF level 6:

- Data Security
- Ethical Hacking
- Digital Forensics

Course Entry Requirements

- Three passes at National 5, one of which should be Maths
- A clear interest in the subject area

Attendance Pattern

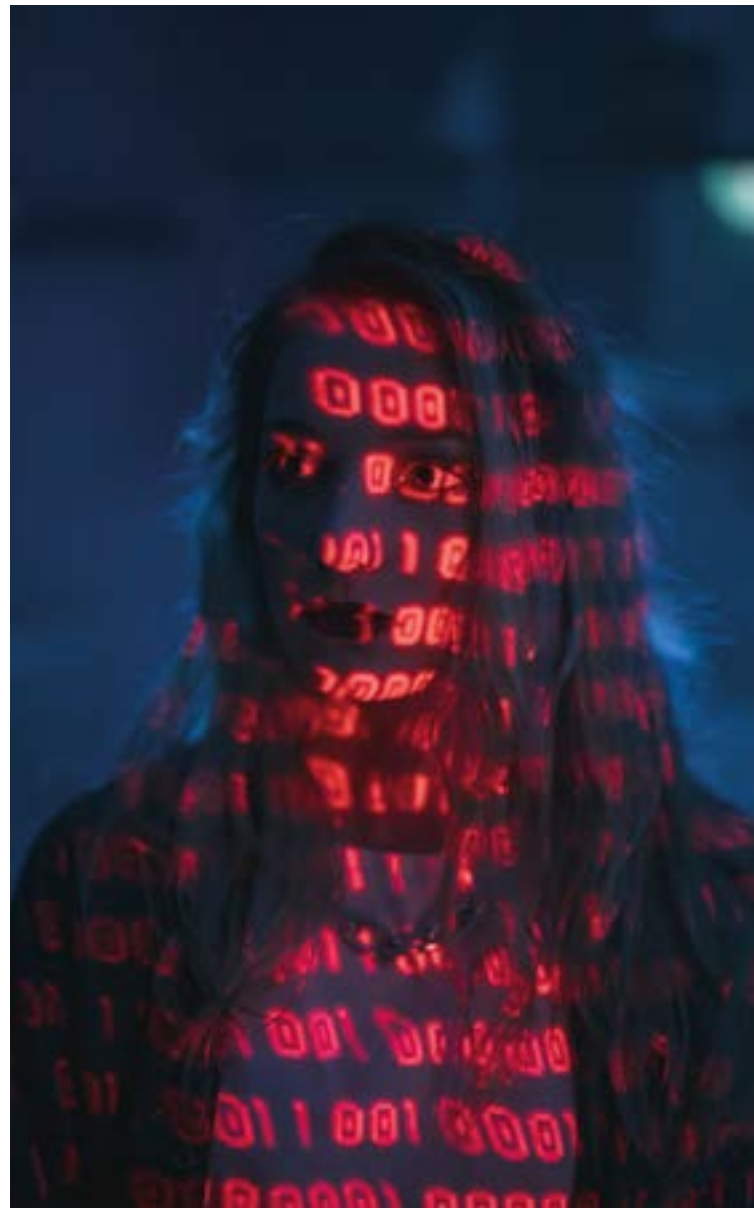
Tuesday and Thursday 1.30pm - 4pm. August 2022 - April 2023.

Employment Routes

Successful completion of this award may allow progression to:

- National Certificate (NC) Digital Media Computing SCQF Level 5 or 6
- National Certificate (NC) Information Technology
- Higher National Certificate/Diploma (HNC/D) Computing, Computer Games Development, Information Technology, Computer Networking, Interactive Media or Multimedia.

The level you might enter would depend on the level and relevance of your other qualifications.





Staying at School



Leaving School



Rest of my world



Advice and Support



News and events

Business & Service Industries





Fashion Brand Retailing

Glasgow Caledonian University **SCQF Level 7, 20 Credit module, equivalent to** **Advanced Higher Grade C**

Course Outline

Fashion Brand Retailing is an exciting course, which allows students to sample university life at Glasgow Caledonian University, the leading Scottish provider of higher education in the field of fashion, marketing and retailing. As well as the chance to meet new people, you will register as a part-time student at the university, gaining a matriculation card and full access to the university's facilities and support networks.

Qualification Breakdown

There are two themes, each with a specific assessment:

- Theme 1: Role, Function and Meaning of Fashion Making Fashion - where does fashion come from?
- Theme 2: How does Fashion Retailing work? What makes a Fashion Retailer successful?

Course Entry Requirements

- Higher English at Grade C
- National 5 English working towards achieving the Higher in S6 will be considered
- National 5 Maths.

You will be asked to submit an application form with either a one page essay on the current key fashion trends or a mood board depicting key trends for Spring/Summer 2022.

Attendance Pattern

Tuesday and Thursday 1.30pm - 4pm.

Progression Pathways

- Progression to BA International Fashion Brand Retailing at GCU



National 5 Financial Services

City of Glasgow College, City Campus SQA National 5 Skills for Work SCQF Level 5

Course Outline

Scotland is internationally recognised as the most important UK financial centre outside London and the South East, with a number of large employers situated in Glasgow. The sector currently employs over 156,700 people (Source - TheCityUK) and is expected to continue to grow. This course is intended to equip learners with the necessary knowledge and skills to enhance their prospects for employment within the financial services industry.

Working closely with industry partners in banking, insurance etc, learners will explore the variety and range of employers and the career opportunities which exist within the sector. They will also become familiar with key words and terms used and will develop an awareness of the impact of the sector on modern society. The development of financial acumen and personal financial responsibility are also given high profile. This course is designed to include a large amount of employer engagement including guest speakers, trips and workshops.

Qualification Breakdown

- Financial Services: Introduction
- Financial Services: Personal Finance Awareness
- Financial Services: Building Positive Relationships with Customers and Colleagues
- Financial Services: Employability Skills

Course Entry Requirements

- National 4 English

Attendance Pattern

Tuesday and Thursday 1.30pm - 4pm

Progression Pathways:

- NC Business
- NC Accounting
- Modern Apprenticeship in Providing Financial Services
- Employment in the Financial Services industry



Legal Studies

City of Glasgow College, City Campus SQA National Progression Award, SCQF 6

Course Outline

Are you interested in a career in Law?

The NPA Scots and Criminal Law gives candidates a broad introduction to the law and legal issues in Scotland. The course begins with fundamentals such as the differences between civil/criminal law and public/private law. Students are taught skills such as legal research and presentation. The course then moves on to cover the main sources of Scots Law, the main players within the legal system and the civil/criminal court structures as well as the tribunal system.

The second part of the course focuses more on the Criminal Justice system and looks at crimes such as assault, robbery, theft and fraud as well as the effect crime has on society, the accused and the victim.

The class is delivered via short lectures, interactive activities and key areas of Scots Law and Society. The course is enhanced by visits and guest speakers from the Law profession and Police Scotland.

The units studied include Introduction to Scots Law and Crime and Society and students will be expected to discuss/debate in group settings.

Qualification Breakdown

- Introduction to Scots Law
- Crime and Society

Course Entry Requirements

- Working towards Higher English

Attendance Pattern

Tuesday and Thursday 1.30pm - 4pm

Progression Pathways

- Police Constable
- Police Staff
- Paralegal Services
- Prison Service
- Public Security
- Lawyer



Supply Chain Operations

City of Glasgow College, City Campus SQA National Progression Award, SCQF 5

Course Outline

The NPA in Supply Chain Operations enables students to develop knowledge and understanding of what a supply chain is, how one operates, and the roles and responsibilities of individuals involved. Students will develop a range of skills, apply their knowledge to real life case studies and provide solutions to current issues. The aim of the award is to:

1. Develop knowledge and understanding of the supply chain, including how materials flow from supplier to customer; how goods are transported internationally, and the impact supply chains have on sustainability.
2. Key learnings of the major functions within supply chains such as manufacturing in China to distributors in the UK.
3. Facilitate progression to industry, further education, and/or higher education within the field of Supply Chain and enjoy a rewarding career.

Qualification Breakdown

- How a Supply Chain Works
- Customers and Suppliers in a Supply Chain
- Personal Development: Self & Work
- Safety, Security & Sustainability in the Supply Chain

Course Entry Requirements

- National 4 English
- National 5 Administration, Business or Modern Studies

Attendance Pattern

Tuesday and Thursday 1.30pm - 4pm

Progression Pathways

- NC/NQ Business or Retail
- HNC/HND Supply Chain Management
- Degree in logistics related courses at university
- Modern Apprenticeship in procurement
- Employment as Assistant Buyer/Freight Forwarding Assistant/ Logistics Operative/Materials Handler/Procurement Assistant/ Warehouse Assistant

Enhancement

An opportunity for work experience may be available from EDC Procurement Team.



Introduction to Marketing, Advertising and Public Relations

City of Glasgow College, City Campus Course Award- SCQF: Level 6

Course Outline

This course is designed to give you an introduction to various marketing specialist areas such as branding, social media marketing and advertising.

Marketing is a growth industry with a rising number of jobs available year on year in the UK. These figures are predicted to continue to grow in this innovative and creative industry.

The classes are delivered via short lectures, interactive activities and practical assignments using digital tools. The course is enhanced by visits and guest speakers from industry practitioners and employers the Higher National programme engage with.

Qualification Breakdown

- Branding an Introduction FT8V12
- Behavioural Aspects of Marketing FT8Y12
- Advertising: An Introduction FT8T12
- Social Media Literacy H7EB46

Course Entry Requirements

Students should be working towards achieving Higher English or a relevant subject such as Business Studies, Economics, History, Media, Modern Studies or Psychology.

Attendance Pattern

Tuesday and Thursday 1.30pm – 4pm.

This course requires a high level of commitment from students genuinely interested in a career within Marketing, Advertising and Public Relations.

Progression Pathways

Progress competitively along with one Higher Grade pass at band C or above (preferably in English, Modern Studies, History, Psychology, Economics, Business or a related subject) onto the HNC Marketing Communications course.

Employment Routes

With appropriate additional qualifications and/or University study the following may be considered:

- Marketing Executive
- Digital Marketer
- Social Media Manager
- Web Content Manager
- Advertising Account Executive
- Public Relations Account Executive.



Journalism

Glasgow Clyde College – Anniesland Campus SCQF Level 6 – Open to S5/6 Pupils

Course Outline

The National Progression Award aims to provide you with an introduction to the activities involved in journalism. You will focus on the key journalistic skills of research and writing as well as interview skills. The course is mostly practical and for a lot of the time you will be completing research and writing activities. You will be sourcing and producing your own stories. You will develop a knowledge of how journalism works in the creative media industries and the responsibilities of those involved.

Additionally, this course will teach you the digital skills which are required in the industry, such as how to structure an online multimedia story for a student news publication. Completing this course will also help to increase your confidence as you interview contributors and bring a story to life. You will also get the opportunity to enjoy a series of guest speakers from the industry who will provide you with career advice and help you with your projects.

Qualification Breakdown

The National Progression Award in Journalism (G9MC 46) – SCQF Level 6 consists of:

2 Mandatory Units:

- Media: Research and Interview Skills for Journalism
- Media: Feature Writing

2 optional units which will be chosen by the college:

- Media: News Writing for Print
- Media: Page Layout and Design for Print
- Media: Basic Website Development
- Media: Photography

Course Entry Requirements

- English, Communication or Media Studies at SCQF Level 5

Attendance Pattern

Tuesday and Thursday 1.30pm to 4pm. August until April.

Progression Pathways

Successful completion of the NPA could lead to further study at NC or HN level in a range of media related disciplines as well as journalism. You might go on to employment in the following areas:

- Modern Apprenticeship in Creative and Digital Journalism
- Trainee Reporter
- Runner
- Multimedia Reporter
- Glasgow Clyde College journalism students have found employment at the Daily Record, the Scottish Sun, the Herald, STV, BBC Scotland, the Scottish Daily Express and other local media outlets.



NPA Events

City of Glasgow College, City Campus Course Award- SCQF: Level 6

Course Outline

The purpose of this course is to give students, with an interest in the events industry a platform from which to pursue a career in the events industry. The programme offers a practical introduction to the events industry consisting of courses to develop knowledge of the event industry and to develop a number of transferable essential skills which could be applied to a range of career choices. The qualification offers the opportunity to progress to a FT course at Level 6 or HNC. This will allow students to make a more informed choice of progression within this highly rewarding industry.

Course Entry Requirements

Whilst there are no formal entry requirements, applicants should be interested in a career in the events industry and studying other subjects at level SCQF Level 5. The ideal candidate will be capable of working well with a willingness to demonstrate:

- A reasonable level of numeracy and verbal skills (National 3 or above)
- The willingness to work and engage as part of a team.
- Able to act under instruction and direction.
- A commitment to work in a reasonable manner under the direction of lecturing staff

Attendance Pattern

Tuesday and Thursday 1.30pm to 4pm

This course requires commitment from students who have a genuine interest in a career within the Events industry.

Progression Pathways

- Further Education - Fulltime courses at SCQF Level 6/7 in Events, Hospitality or Tourism provided the applicant has one additional qualification at SCQF Level 5
- Employment within Events Industry



NPA Financial Services

City of Glasgow College – City Campus Course Award- SCQF: Level 6

Course Outline

For students in S5, the National Progression Award in Financial Services is classroom based and is enhanced with a programme of employer engagement workshops and activities, including The Investment Challenge.

This NPA is designed to introduce you to the world of work in the Financial Services sector and to develop your communication and customer service skills to enable you to gain a role within the sector.

You will learn how the Financial Services sector contributes to the economy as a whole, the different institutions operating in the sector and the job roles and career paths available. You will gain an appreciation of the importance of regulatory control within the Financial Services sector and the main bodies responsible for this. You will be introduced to the various categories of risk management and how companies manage risk.

Qualification Breakdown

- Financial Services: The Regulatory Framework
- Financial Services: Communication
- Financial Services: Promoting Positive Customer Relationships
- Financial Services: Personal Finance Awareness

Course Entry Requirements

This course is suitable for students in S5 who are working towards Highers in relevant subject areas.

Essential criteria as follows:

- Achieved or working towards Higher (A-C) in any STEM subject (or English)

Attendance Pattern

Tuesday and Thursday 1.30pm to 4pm

Progression Pathways

- HNC/D in Financial Services
- Modern Apprenticeship in Financial Services
- University

Employment Routes

Employment in the Financial Services Industry, insurance, banking.



Up in the Air and on the Ground: Hospitality, Events and Tourism

City of Glasgow College, City Campus SQA Units, SCQF Level 4/5

Course Outline

This new and exciting collaborative course brings together the world of travel, events and hospitality in an innovative and inspirational way. It is a practical course which will focus on developing a range of skills that are essential in the 3 related industries. Through your experience in each subject area you will:

- Gain air crew experience in our CITYAIR resource which is a simulated airline cabin and purpose built check-in desks
- Develop a range of food and drink service skills from counter service to barista training and be introduced to various types of beverages such as speciality coffees/teas, mocktails and other exotic beverages
- Plan and participate in events within a realistic live restaurant environment

To further enhance learning, visits will be included in the programme to Glasgow Airport and tourist destinations within the city.

Qualification Breakdown

- Service of Food and Drink SCQF 5
- Introduction to Beverages - Non Levelled
- Assist with an Event SCQF 4
- Event Theming SCQF 4
- Working as Air Cabin Crew: An Introduction SCQF 5
- Resort Representation: An Introduction SCQF 5

Course Entry Requirements

- Three National 4 awards including English and Maths
- This course is of most value to students in their leaving year who are unsure about their vocational goals

Attendance Pattern

Tuesday and Thursday 1.30pm - 4pm

Progression Pathways

- NQ Hospitality/NQ Events
- NC Travel and Tourism
- City and Guilds Diploma in Air Cabin Crew Operations
- Employment as Events Assistants/Food and Beverage Operators/Exhibition and Conferencing Staff





Staying at School



Leaving School



Rest of my world



Advice and Support



News and events

Barista

Glasgow Clyde College, Anniesland Campus SCQF Level 5 – Open to S5/6 Pupils

Course Outline

Are you interested in pursuing a career in the hospitality industry? The Barista award will allow you to develop and gain skills in hospitality as well as developing team working, building organisational skills and confidence whilst working with the public. You will learn how to operate a commercial Barista machine and how to serve and meet and greet customers. This group award is designed to complement your academic studies at school while simultaneously providing you with a valuable insight into the hospitality industry.

Qualification Breakdown

The Group Award GP8F 45, SCQF Level 5 consists of:

- Barista Skills
- GCC certificate for Food and Beverage Experience.

Attendance Pattern

Tuesday and Thursday 1.30pm - 4pm. Eighteen weeks, August until January or January until May.

Course Entry Requirements

- An interest in coffee and other beverages as this is a practical course with students learning to use a commercial Barista machine
- Includes submitting a project on coffee and other beverages
- National 4 English
- IT Skills

Progression Pathways

You might go on to do:

- A full time NPA LEVEL 4/5 Bakery
- A full time NPA 4/5 Professional Cookery
- A Modern Apprenticeship, or Skillseeker training, in the hospitality industry, leading to a relevant Scottish Vocational Qualification (SVQ) Levels 2 and 3.
- A full-time or part-time job in the hospitality industry

You would normally train at college, in the restaurant or Bistro. You do not need to be over 18 to complete this course and get a job providing Barista service. Come and have fun learning.



Introduction to Food Service Skills

City of Glasgow College, City Campus City of Glasgow College Certificate, SCQF 4

Course Outline

This course is designed for pupils who have additional support needs for learning. Students will develop a range of employability skills for the Hospitality Industry. As well as food and drink service skills practice, students will develop their confidence and team working skills and an awareness of the size and opportunities for employment within the Hospitality Industry.

Students will also have the opportunity to train within our training environments such as City Bistro and Scholars Restaurant.

Qualification Breakdown

- REHIS - Elementary Food Hygiene Certificate
- City of Glasgow College - Introduction to Food Service Skills Certificate
- Customer Care
- Local Tourist Attractions
- Food Service Skills

Work Experience - one week during March

Course Entry Requirements

No formal entry requirements but candidates must have a keen interest in the subject area.

Attendance Pattern

Thursday 9.30am - 2.45pm

Progression Pathways

Students could progress to

- Introduction to Food Service Skills Year 2
- Senior Phase Hospitality/Events/Travel & Tourism
- NQ Events/Hospitality at City of Glasgow College



Introduction to Café Culture

Glasgow Kelvin College, East End Campus SfW, SCQF Level 4

Course Outline

Students will learn about what happens in a professional kitchen, and what's involved in preparing and serving a range of food to customers. Students will understand the work involved in cafés and bistros and will benefit from the realistic experience of working in the college training café.

Students will have the opportunity to develop and practice a range of skills required to gain employment in the hospitality and catering industry, including making and serving food, and working as a team in a café. This includes:

- Presentation of food
- Customer service skills
- Essential employability skills for the catering industry
- Setting-up in the catering industry
- Food hygiene for the catering industry
- Working as part of a team associated with running a café.

Qualification Breakdown

- Hospitality: Working in the Hospitality Industry
- Hospitality: Working in the Professional Kitchen
- Hospitality: Working front of House
- Hospitality: Introduction to events

Course Entry Requirements

Currently working at National 3 or 4 in a variety of subjects, with potential of working at National 4.

Must have an interest in working in the hospitality industry
Some experience of food preparation or catering knowledge would be an advantage.

Students may be asked to take part in a related selection activity.

Attendance Pattern

Tuesday & Thursday 1.30pm - 4pm

Progression Pathways

NQ Introduction to Hospitality

NQ Hospitality

Future employment in a hospitality setting - café, bistro, restaurant.





Staying at School



Leaving School



Rest of my world



Advice and Support



News and events

Science, Engineering, Design & Manufacture Industries



Practical Electronics

Glasgow Clyde College, Cardonald Campus SCQF Level 5 – Open to S5/6 Pupils

Course Outline

The National 5 Practical Electronics course is mainly practical and you will complete practical projects and investigative tasks in a range of contexts. You will gain a broad practical introduction to electronics and completing this course will give you a solid foundation for further study or a career in electronics, electrical engineering and related disciplines.

Completing this course will help you develop knowledge and understanding of key concepts in electronics and apply these in a range of contexts. You will learn a range of practical skills in electronics, including skills in analysis and problem-solving, design skills, skills in the safe use of tools and equipment, and skills in evaluating products and systems.

You will also gain an awareness of the importance of safe working practices in electronics as well as an understanding of the role and impact of electronics in changing and influencing society and the environment

The course provides a valuable complementary practical experience if you are already studying engineering science, physics or other science courses.

Qualification Breakdown

- Group Award C860 75 National 5 Practical Electronics
- The course assessment has two components - Question paper and Practical activity.

The National 5 Practical Electronics course has three areas of study;

- Circuit design
- In this area, you will develop an understanding of key electrical concepts and electronic components. You will analyse electronic problems, design solutions to these problems and explore issues relating to electronics.
- Circuit simulation

- In this area, you will use simulation software to assist in the design, construction and testing of circuits and systems and to investigate their behaviour.
- Circuit construction
- You will gain experience in assembling a range of electronic circuits, using permanent and non-permanent methods. You will develop skills in practical wiring and assembly techniques, carrying out testing and evaluating functionality.

Course Entry Requirements

You must have:

- National 5 Maths and English

Attendance Pattern

Monday and Wednesday 1.30pm to 4pm. August until April.

Progression Pathways

Successful completion of this award may allow progression to:

- National Certificate (NC) Level 6

The level you might enter would depend on the level and relevance of your other qualifications.



HNC Electronic Engineering

Glasgow Kelvin College Springburn Campus SCQF Level 7

Course Outline

The HNC Electronic Engineering course will develop your ability to analyse and solve electrical engineering problems, and apply knowledge, understanding and skills to analyzing and designing electronic systems, but also has a strong emphasis on practical skills and is intended for those interested in developing skills for a highly paid career in this exciting and respected industry.

The award provides a broad based technical education for those intending to start a career in electronic engineering or who wish to progress to university to study at degree level.

Qualification Breakdown

Electronic Engineering Theory includes:

- Electrical Principles
- Power Systems and Power Electronics
- Control Systems and Transducers.

Practical hands-on work includes:

- Software Programming in C++
- Programmable Logic Controllers
- Electrical and Electronic Instruments
- Analogue and Digital Electronics
- Power Electronics Circuits.

Course Entry Requirements

You must have:

- At least one Higher passes at grade C (One must be Mathematics or Physics). If only Physics you must also have passed Level 5 maths.

Attendance Pattern

Wednesday and Thursday 9am to 4pm. August to June

Progression Pathways

Academic Progression

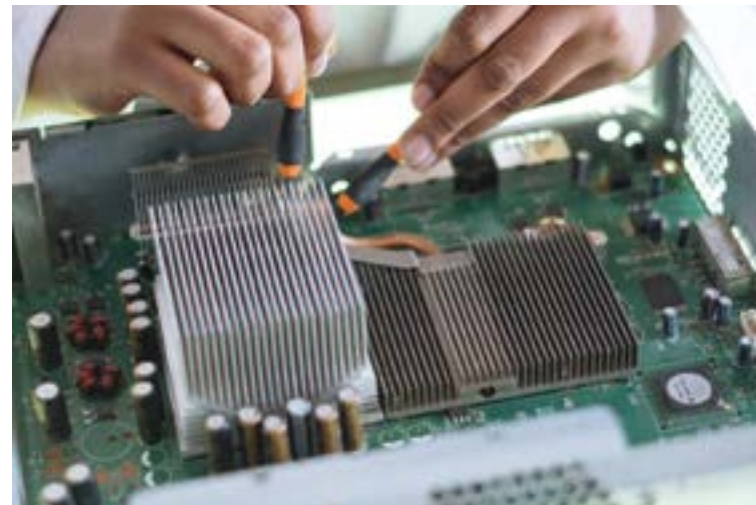
For instance this course may enable you to progress to year 1 or 2 of Electrical and Electronics Engineering degree programmes at various universities. You will also be able to apply for other degree programmes such as Building Services and Engineering Management and will be able to join appropriate years of these courses. Please note that entry criteria and year of entry may vary from University to University.

Career Progression

Once you have an HNC you are very employable! We actively encourage our students to seek careers in engineering and arrange guest speakers and visits to industry. Learners wishing to progress directly to employment can find well paid jobs as Engineers or Technicians with energy generation and transmission companies, renewables developers, engineering contractors, consulting engineers or local authorities.

Professional Registration

The HNC qualification entitles Engineers working in the field of Electronic Engineering to apply for membership of professional bodies, such as the IET, who are registered with The Engineering Council, for the designated title of 'Engineering Technician' (Eng.Tech.).





Staying at School



Leaving School



Rest of my world



Advice and Support



News and events

Automotive Engineering

Glasgow Clyde College, Anniesland Campus SQA National 4 Skills for Work

Course Outline

This course aims to introduce school pupils to Automotive Engineering and is an ideal taster programme for students considering further studies or a career in the automotive sector.

This course is delivered at SCQF level 4 and comprises of four units. All course units are mandatory to achieve the group award although each unit can be taken as a standalone unit. This is a national course and is assessed internally.

Qualification Breakdown

- Automotive Skills for Work: The Garage
- Automotive Skills for Work: The Car
- Automotive Skills for Work: The Technician
- Automotive Skills for Work: The Vehicle Modification Project

Course Entry Requirements

- Working at the senior phase of the curriculum and have clear interest in the subject area

Attendance Pattern

Tuesday and Thursday 1.30pm - 4pm

Progression Pathways

- City & Guilds Diploma in Vehicle Maintenance SCQF Level 4
- SVQ Level 2 Qualification in Performing Engineering Operations - SCQF Level 5
- Modern Apprenticeship in the automotive sector



Building Services Engineering

Glasgow Kelvin College, Springburn Campus SQA National Progression Award, SCQF 5

Course Outline

Are you interested in working in the Building Services Engineering sector or gaining a qualification leading onto higher education?

On successful completion of this course and referral from the college, you will also secure a guaranteed registration place with the trade institutional bodies. This registration is structured and designed to lead onto an interview for an apprenticeship.

Qualification Breakdown

- Basic Electrical Installation Operations
- Basic Plumbing Operations
- Basic Heating and Ventilation Operations
- Basic Refrigeration and Air Conditioning
- Energy and the Environment
- Systems, Roles & Responsibilities
- Science

Course Entry Requirements

- 3 National 4 awards
- National 4 Maths and/or Physics would be advantageous
- Candidates will be required to attend a pre-course interview and aptitude test

Please note: Students are not allowed in workshops without boots and overalls. It is the young person's responsibility to bring these to college.

Attendance Pattern

Tuesday and Thursday 1.30pm - 4pm

Progression Pathways

- NC/HNC/HND/Degree in any building services related discipline
- Modern Apprenticeship in Construction industry

Building Service Engineering

Glasgow Kelvin College - Springburn Campus SCQF Level 6 – Open to S5/6

Course Outline

The National Certificate (NC) in Building Services Engineering will provide you with the opportunity to develop the knowledge, understanding and skills of the building services engineering sector of the construction industry.

Qualification Breakdown

National Certificate in Building Services Engineering SCQF Level 6:
Mandatory Units:

- Health and Safety
- Graphical Detailing
- Science
- Electrical & Electronic Technology
- Building Services Engineering Technology
- Mathematics: Technician
- Construction Technology & Design
- Building Services Engineering: Design Project.

You will study optional units to be discussed with the lecturer once course commences, such as:

- Heating & Plumbing
- Air Conditioning & Ventilation
- Refrigeration Technology Planning, Organisation and Control of Resources in Construction.

Course Entry Requirements

- National 5 Maths and a Science at A or B level

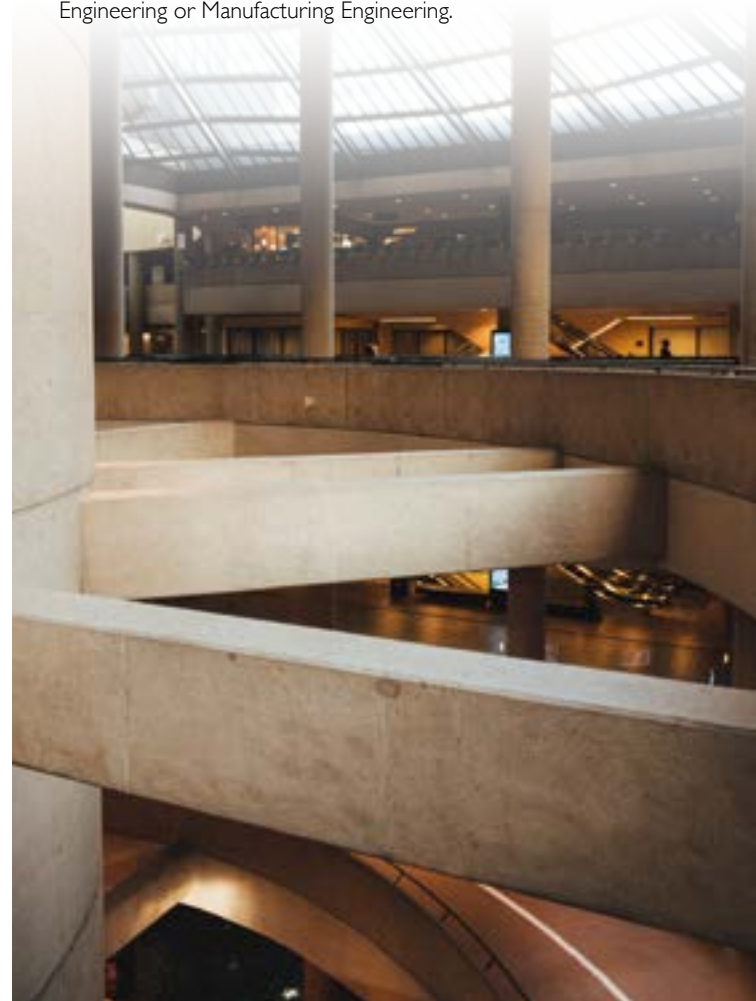
Attendance Pattern

Monday and Wednesday 9am to 4pm. August to June

Progression Pathways

You might go on to:

- Modern Apprenticeships in Heating and Ventilation, Service and Maintenance, Refrigeration and Air Conditioning or general employment in the engineering or construction industry.
- A Higher National Certificate (HNC) in Building Services Engineering, Electrical Installation, Plumbing, Mechanical Engineering or Manufacturing Engineering.



Building Service Engineering

Glasgow Kelvin College - Springburn Campus SCQF Level 7 – Open to S6 Pupils

Course Outline

The Higher National Certificate (HNC) course will provide you with the opportunity to develop technical skills in Building Services Engineering. You will undertake a course of study that relates to the design, installation, maintenance and management of heating, ventilation and air conditioning (HVAC) systems within commercial/ industrial buildings.

Qualification Breakdown

Higher National Certificate in Building Services Engineering SCQF Level 7:

- Design Principles and Application
- Heating
- Ventilating and Air Conditioning
- Thermofluids and Acoustic Criteria
- Analytical Methods
- Building Services Engineering Science
- Piped Distribution Services
- Health and Safety in the Building Services Industry
- Building Services Project Management
- Final Project.

Course Entry Requirements

- Higher Maths and a Science at A or B level

Attendance Pattern

Monday and Wednesday 9am to 4pm. August to June

Progression Pathways

- Glasgow Kelvin College has an articulation partnership with many universities to a degree in engineering
- Modern Apprenticeships in Heating and Ventilation
- Service and Maintenance
- Refrigeration and Air conditioning or general employment in the engineering or construction industry.



Mechanical Engineering

Glasgow Kelvin College, Springburn Campus SQA Higher National Certificate, SCQF 7

Course Outline

"The UK needs over one million new engineers and technicians in the next five years" Royal Academy of Engineering

"Average age of engineer in the UK is 54" BBC News

"Chartered Engineers earn an average of £63,000 a year" Engineering Council

Together with many other countries, the UK economy is fast becoming reliant upon Science, Technology, Engineering and Maths (STEM) industries. This, combined with the ageing population of the current engineering fraternity, creates unrivalled opportunities for aspiring engineers and technicians. As an engineer your skills will be in demand and you will work at the forefront of an exciting and evolving industry.

This course could be your first step towards a career as an engineer or technician. You will study the fundamental concepts of mechanical engineering including dynamics, statics, thermodynamics and fluid mechanics. You will gain skills in subjects such as CAD, engineering drawing and other industry essential subjects, which takes place in the classroom, CAD laboratory and a purpose built engineering laboratory.

Qualification Breakdown

- Dynamics
- Thermofluids
- Pneumatics & Hydraulics
- Statics and Strength of Materials
- Materials Selection
- Engineering Mathematics I
- Communication: Practical Skills
- Quality Management: An Introduction
- Engineering Principles
- Computer Aided Design
- Engineering Drawing
- Graded Unit I

Course Entry Requirements

- Higher Maths or Higher Physics at A-C
- An interest in mechanical engineering

Attendance Pattern

Monday and Tuesday 9am - 4pm

Continuous attendance required August-June

Please note: Independent travel is required.

Progression Pathways

- HND Mechanical Engineering
- Dependent on meeting entry requirements, degree courses in engineering at university
- Modern Apprenticeship in engineering
- Employment as a junior technician



Construction

Glasgow Kelvin College, Springburn Campus SQA National Progression Award, SCQF 5

Course Outline

The course is designed for candidates who are looking to enter into a Modern Apprenticeship in the following trades: Brickwork, Carpentry & Joinery, Painting & Decorating.

Qualification Breakdown

- Bricklaying
- Carpentry & Joinery
- Painting & Decorating
- Health and Safety in the Construction Environment
- Construction Occupation Practices
- Efficient Construction Practices
- Appreciation of Access Platforms and Equipment
- Information & Communication Technology
- Employment and Behavioural Skills

Course Entry Requirements

- National 4 English, Maths and a Science
- Aptitude test
- Interview

Attendance Pattern

Monday 9am - 4.15pm

Tuesday 9am - 4.15pm

Wednesday 9am - 4.15pm

Continuous attendance required August-June

Please note: Independent travel is required.

Progression Pathways

- City & Guilds Bench Joinery
- NC Built Environment SCQF Level 6
- HNC Construction Management SCQF Level 7
- Modern Apprenticeship in Construction Trades (CITB)

Please note: Students are not allowed in workshops without boots and overalls. It is the young person's responsibility to bring these to College.



NQ Construction Crafts

City of Glasgow College, City Campus SCQF Level 5

Course Outline

The purpose of this course is to give candidates with an interest in the construction industry the opportunity to test their aptitude in a variety of main trade skills. You will have the opportunity to gain skills and experience in brick work, carpentry and decorating. This will allow you to identify the craft area you enjoy most and therefore make an informed choice of progression within this highly rewarding industry.

Qualification Breakdown

- Construction Crafts: Employability Skills
- Construction Crafts: One Brick Walling
- Construction Crafts: Bench Joinery
- Construction Crafts: Decorative Painting Techniques

Course Entry Requirements

No formal entry requirements, students should be interested in a career in the construction industry and be capable of working at SCQF level 5

Students should also be willing to demonstrate:

- A reasonable level of numeracy and verbal skills (National 3 or above)
- The willingness to work and engage as part of a team
- Able to act under instruction and direction
- A commitment to work in a manner which supports health and safety at work under direction of lecturing staff.

Attendance Pattern

Tuesday & Thursday 1.30pm - 4pm

Progression Pathways:

- NQ in Construction related course
- Modern Apprenticeship in Construction Crafts



Construction Management

Glasgow Kelvin College, Springburn Campus SQA Higher National Certificate, SCQF 7

Course Outline

The HNC Construction Management is a unique opportunity to complete a recognised qualification within one year while still at school. This course is designed to provide in-depth insight into the roles, responsibilities and duties performed by Construction Management Trainees in the building industry.

Qualification Breakdown

- Construction Technology: Substructure
- Building Services in Large Buildings
- Building Services: Introduction
- Site Administration
- Construction Technology: Domestic Construction
- Construction Materials and Specification
- Standard Forms of Construction Contracts
- CAD: 2DI
- HNC Construction Management: Graded Unit 1
- Health and Safety in Construction
- Construction Technology: Industrial/Commercial Superstructure
- Construction Site Surveying

Course Entry Requirements

- Higher Maths and English
- One other Higher, preferably Physics or Chemistry
- Successful performance at interview

Attendance Pattern

Monday & Tuesday 9am - 4pm
Continuous attendance required August-June

Please note: Independent travel is required.

Progression Pathways:

Successful completion of the HNC Construction Management and a Graded Unit at B, students can move on to:

- HND Construction Management and then
- Progress to Year 2 BSc Construction Management at Glasgow Caledonian University
- Modern Apprenticeship in construction industry



Foundation Apprenticeships



What is a Foundation Apprenticeship?

A Foundation Apprenticeship (FA) is a work-based learning opportunity for senior phase pupils. The majority of FA programmes last two years, with pupils beginning their FA in S5, however there are some one year FA programmes available for S6 pupils. If you choose to study an FA, you will spend part of the school week out at college or with a local employer, and will complete the FA alongside your National 5s and Highers. A Foundation Apprenticeship can help you gain valuable work experience and access work-based learning opportunities while still at school.

Learning in the Workplace

By giving you earlier exposure to the world of work, you will be developing the skills, experience and knowledge you need when you leave school. An FA also helps you develop the skills employers want including timekeeping, problem solving, communication and teamwork. During the FA you will work on real projects with an employer. Some of Scotland's biggest organisations are involved, including Barclays, Network Rail, Scottish Water and the NHS. You will gain work experience, a qualification recognised by industry and connections with employers, all while you are still at school. It's the chance to get a head start on your career path and the perfect opportunity to try the career out – then you can decide if it's the right career for you!

On successful completion of the FA programme there are a number of progression pathways open to you including accelerated entry onto a Modern Apprenticeship or continued study at college or university, dependent on meeting entry requirements. Should you choose to study a related HNC/HND at college, all successful FA students will be guaranteed an interview with City of Glasgow, Glasgow Clyde and Glasgow Kelvin Colleges. Each of the one and two year FA frameworks are linked to key sectors of the Scottish economy that have identified a skills shortage. This means there are employment opportunities if you choose to go straight into work from school.

Please note: Some elements of the Foundation Apprenticeship programmes are subject to change, including college campus and finish times.

For more information on what Foundation Apprenticeships are available please visit www.eastdunbarton.gov.uk/edopps4all



Staying at School



Leaving School



Rest of my world



Advice and Support



News and events

Employability and Skills for Learning, Life and Work



Supported Courses – Glasgow Kelvin College

Transitions School Link S6 Glasgow Kelvin College, Easterhouse Campus SQA National 1

Course Outline

This course is designed for pupils who require additional support. The aim and focus of this programme is to give pupils working at National 1 the opportunity to experience college one day per week while taking part in an experiential activity based curriculum. The course rotates at the half way stage to allow pupils to take part in all four subject areas. All units are delivered at level 1 and 2 depending on the range and ability of the individual learner:

Qualification Breakdown

- Hobbies and Interests (Art)
- Performing Arts – Group Activity (Music)
- Healthy Eating
- Dramatic Situations

Course Entry Requirements

- Working at National 1 and towards National 2

Attendance Pattern Tuesday 10am - 3pm
Course runs August-June

Progression Pathways

- National 1 Skills for Learning Life and Work, full time at college
- National 2 Skills for Learning Life and Work, full time at college

Transitions School Link S5 Glasgow Kelvin College, Easterhouse Campus SQA National 1

Course Outline

This course is designed for pupils who require additional support. The aim and focus of this programme is to give pupils working at National 1 the opportunity to experience college one day per week while taking part in an experiential activity based curriculum. All units are delivered at National 1 and 2 depending on the range and ability of the individual learner.

Qualification Breakdown

- Food Preparation: Making a Healthy Basic Meal
- Practical Craft Skills: Working with Materials

Course Entry Requirements

- Working at National 1 or towards National 2

Attendance Pattern

Thursday 10am - 3pm
Course runs August-June

Progression Pathways

- Transitions School Link S6 SQA National 1
- National 1 Skills for Learning Life and Work, full time at college
- National 2 Skills for Learning Life and Work, full time at college



Supported Courses – Glasgow Kelvin College

Transitions School Link S6 Glasgow Kelvin College, Easterhouse Campus SQA National 1/2

Course Outline

This course is designed for pupils who require additional support. This is a two day programme for pupils in S6, who want to become familiar with college life while undertaking a range of units at National 1 and 2, depending on the ability of the learner. The programme will support pupils to become more independent and better prepared for the transition to college.

Qualification Breakdown

- Personal Development: Developing Positive Behaviour
- Life in Another Country: Aspects of Life
- Performance Arts: Contributing to a Performance
- ICT: Working with Digital Images

Course Entry Requirements

- Working at National 1 or towards National 2

Attendance Pattern

Monday and Tuesday 10am - 3pm
Course runs August-June

Progression Pathways

- National 1 Skills for Learning Life and Work, full time at college
- National 2 Skills for Learning Life and Work, full time at college

Transitions Vocational Taster Glasgow Kelvin College, Springburn Campus SQA National 2/3

Course Outline

This course is designed for pupils who require additional support. The aim and focus of this programme is to give pupils working at National 2 or 3 the opportunity to experience college life and take part in a rotation of 4 vocational taster subjects.

Qualification Breakdown

- Working with Materials (Construction)
- Creating Media content (Comic development)
- Science – Environmental Studies
- Art and Design Capturing Digital Images

Course Entry Requirements

- Working at National 2 or 3

Attendance Pattern

Friday 9am – 12noon
Course runs August-June

Progression Pathways

- National 2 Skills for Learning Life and Work, full time at college
- National Certificate in Employability, SCQF 3, full time at college
- National 4 Pathways to Employment, full time at college



Supported Courses – Glasgow Kelvin College

Transitions Music and Drama Glasgow Kelvin College, Easterhouse Campus SQA National 2

Course Outline

This course is designed for pupils who require additional support. The aim and focus of this programme is to give pupils working at National 2 the opportunity to experience college, while developing music and drama skills. These subjects focus on building confidence and team working.

Qualification Breakdown

- Personal Achievement: Performing Arts - Individual Activity
- Performance Arts: Contributing to a Performance
- Music: Exploring Sound and Rhythm

Course Entry Requirements

- Working at National 2 or 3 with no support

Attendance Pattern

Wednesday 10am - 3pm
Course runs August-June

Progression Pathways

- National 2 Skills for Learning Life and Work, full time at college
- National Certificate Employability/Citizenship, SCQF 3, full time at college



Transitions Construction Glasgow Kelvin College, Easterhouse Campus SQA National 3

Course Outline

This course is designed for pupils who require additional support. The aim and focus of this programme is for pupils working at National 3 to gain experience of college life and develop skills for the construction industry. Pupils will get the opportunity to rotate within the construction department to experience the range of trades within the sector.

Qualification Breakdown

- Painting and Decorating
- Joinery
- Bricklaying

Course Entry Requirements

- Working at National 3

Attendance Pattern

Monday 9am - 12noon
Course runs August-June

Progression Pathways

- National Certificate in Employability, SCQF 3, full time at college
- National 4 Pathways to Employment, full time at college
- NPA Construction SCQF 4, full time at college





Staying at School



Leaving School



Rest of my world



Advice and Support



News and events

Supported Courses - Glasgow Clyde College

For further information on courses please contact:

Anniesland Campus

Hugh Kelly

hkelly@glasgowclyde.ac.uk

Tel No: 0141 357 7697

Cardonald Campus

Iain Jenkins

ijenkins@glasgowclyde.ac.uk

Tel No: 0141 272 3167

Langside Campus

Steve Wilson

swilson@glasgowclyde.ac.uk

Tel No: 0141 272 3772

Wider Achievement Awards



Every secondary school in East Dunbartonshire offers a wide variety of awards which will demonstrate how a student's activity in the community complements their in-school learning, supports them to become successful learners, confident individuals, effective contributors and responsible citizens. Speak to your Guidance Teacher or Year Head to find out which Wider Achievement Awards are delivered in your school.

The Awards Network

The Awards Network has information on the range of awards available and helps you to identify how these awards can connect together.

Use the link below to help you to find out more about the Wider Achievement Awards available in your school and how it connects to others within the Awards Network.

www.awardsnetwork.org

Disclaimer

East Dunbartonshire Council will endeavour to deliver courses in accordance with the descriptions set out in this booklet. The Council reserves the right to make variations to the contents or methods of delivery of courses, to discontinue courses and to merge or combine courses if such action is reasonably considered to be necessary by the Education Service. The information given in this booklet is believed correct at the time of publication. The Education Service reserves the right, at its discretion, at any time and for any reason, to make changes to the services offered and set out in this booklet without prior notice including, but not limited to, the following:

- to withdraw the offer of a course which fails to recruit the minimum number required by regulation.
- to make changes to syllabuses and courses for reasons including meeting technological or academic developments or employers' requirements particularly in specialist options.





sustainable thriving achieving

East Dunbartonshire Council

www.eastdunbarton.gov.uk

Other formats

This document can be provided in large print, Braille or on CD and can be translated into other community languages. Please contact the Council's Communications Team at:

East Dunbartonshire Council, 12 Strathkelvin Place, Southbank,
Kirkintilloch, G66 1TJ Tel: 0300 123 4510

0300 123 4510
0300 123 4510
0300 123 4510
0300 123 4510
0300 123 4510
0300 123 4510
0300 123 4510
0300 123 4510
0300 123 4510
0300 123 4510

www.eastdunbarton.gov.uk/edopps4all